

# CEWELD E 7024 (150)

**TYPE** High efficiency, rutile electrode with approximately 150% metal recovery

**APPLICATIONS** CEWELD® E 7024 (150) is a high performance electrode with a thick rutile coating and a recovery of 150%. For joining and surfacing in mechanical engineering, body and wagon building as well as in the fabrication of vessels and containers and in shipbuilding. Also Wagon building, general construction .

**PROPERTIES** CEWELD® E 7024 (150) has a high current carrying capacity and good striking properties. This electrode is very economical thanks to low spattering losses and easy slag removal.

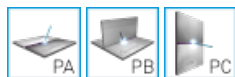
**CLASSIFICATION**

AWS	A 5.1: E 7024
EN ISO	2560-A: E 42 0 RR 73
F-nr	1
FM	1

**SUITABLE FOR** **Rp < 420 MPa (60ksi) ISO 15608: 1.1 ReH < 275 MPa, 1.2 275 < ReH < 360 MPa , (1.3 ReH > 360 MPa < 420 MPa)**  
 1.0035, 1.0038, 1.0039, 1.0044, 1.0112, 1.0116, 1.0130, 1.0145, 1.0253, 1.0254, 1.0255, 1.0258, 1.0259, 1.0319, 1.0345, 1.0345, 1.0345, 1.0348, 1.0352, 1.0418, 1.0420, 1.0425, 1.0425, 1.0425, 1.0451, 1.0452, 1.0453, 1.0457, 1.0459, 1.0460, 1.0460, 1.0461, 1.0486, 1.0490, 1.0491, 1.0619, 1.1100, 1.0409, 1.0421, 1.0426, 1.0429, 1.0430, 1.0436, 1.0473, 1.0481, 1.0482, 1.0484, 1.0505, 1.0545, 1.0546, 1.0562, 1.0566, 1.0570, 1.0578, 1.0581, 1.0582, 1.8902, 1.8912, 1.8932  
 S235JR-S355JR, S235JO-S355JO, P195TR1-P265TR1, P195GH-P265GH, L245NB-L360NB, L245MB-L360MB, L415NB, L415MB, WStE 380, WStE 420, S420NL  
 A, B, D  
 ASTM A 106, Gr. A, B; A 283 Gr. A, C; A 285 Gr. A, B, C; A 501, Gr. B; A 573, Gr. 58, 65, 70; A 633, Gr. A, C; A 711 Gr. 1013; API 5 L Gr. B, X42, X52, X56, X60, X65 (Root X 80)

**APPROVALS** CE

**WELDING POSITIONS**



**TYPICAL CHEMICAL ANALYSIS OF WELD METAL (%)**

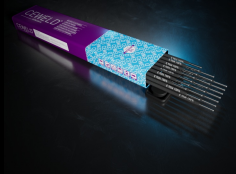
C	Si	Mn	P	S
0.08	0.3	0.75	0.025	0.025

**ALL WELD MECHANICAL PROPERTIES**

Heat Treatment	R <sub>p0,2</sub> MPa	R <sub>m</sub> MPa	A <sub>5</sub> (%)	Impact Energy (J) ISO-V 0°C
As Welded /	410	550	23	60

**REDRYING TEMPERATURE** 140°C / 2 hr

**GAS ACCORDING EN 14175**



# CEWELD E 7024 (150)

E 7024 (150) 3,2 X 450MM	Type	KG/unit	EANCode
	Vacuum	2,6	8720682050736
E 7024 (150) 4,0 X 450MM	Type	KG/unit	EANCode
	Vacuum	2,7	8720682050743
E 7024 (150) 5,0 X 450MM	Type	KG/unit	EANCode
	Vacuum	2,6	8720682050750