
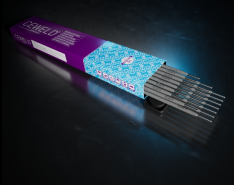


# CEWELD E DUR SS 60Ti

TYPE	Hardfacing electrode for cutting edges and many overlay applications.							
APPLICATIONS	Developed for wear resistant overlays that faces high working temperatures and excellent for rebuilding cutting edges of knives and other cutting equipment.							
PROPERTIES	Outstanding alloy against abrasion, impact and high temperatures up-to 550 °C. The weld deposit of CEWELD DUR SS 60Ti is more or less comparable with HSS (High Speed Steel) and will offer outstanding welding properties on both AC and DC+ Recommended for manufacturing and reconditioning cutting tools.							
CLASSIFICATION	AWS	A 5.13: ~E Fe6						
	EN ISO	14700: E Fe4						
	DIN	8555: E4-UM-60-ST						
	F-nr	71						
SUITABLE FOR	Cutting tools, Shear blades, Milling cutters, Drills, Hot work tools, wood knives etc. High speed Tool steel deposit.							
APPROVALS	No Approvals Found							
WELDING POSITIONS								
TYPICAL CHEMICAL ANALYSIS OF WELD METAL (%)	C	Si	Mn	Mo	V	Fe	W	Cr
	0.9	0.4	1	8	1.5	Rem.	2	5
ALL WELD MECHANICAL PROPERTIES	Heat Treatment	R <sub>p0,2</sub> MPa	R <sub>m</sub> MPa	A <sub>5</sub> (%)		Hardness Rockwell C		
	As Welded /					Avg. 60		
REDRYING TEMPERATURE	300°C / 2 hr							
GAS ACCORDING EN 14175								



# CEWELD E DUR SS 60Ti

E DUR SS 60Ti 2,5 X 350MM	Type	KG/unit	EANCode
	Can	2,4	8720663401724
E DUR SS 60Ti 3,2 X 350MM	Type	KG/unit	EANCode
	Can	2,5	8720663401731
E DUR SS 60Ti 4,0 X 350MM	Type	KG/unit	EANCode
	Can	2,5	8720663401748