

CEWELD SA 308L

TYPE Solid stainless steel wire for submerged arc welding (SAW). (Type 308L, 19 9L)

APPLICATIONS Boilers, agriculture, liquid storage tanks, food machinery, furniture etc.

PROPERTIES CEWELD SA 308L has good general corrosion resistance. The alloy has a low carbon content, making it particularly recommended where there is a risk of intergranular corrosion. Best to be used with our agglomerated flux FL 8111, FL 838 or fused flux FL 880

CLASSIFICATION

AWS	A 5.9: ER308L
EN ISO	14343-A: S 19 9 L
F-nr	6
FM	5
W.Nr.	1.4316

SUITABLE FOR **ISO 15608: 8.1 Austenitic ≤ 19 % Cr 9% Ni, TÜV 1000: Gr. 21 - 22 (29 max.350°C),**
 1.4301, 1.4306, 1.4307, 1.4308, 1.4311, 1.4312, 1.6900, 1.6901, 1.6902, 1.6903, 1.9606, 1.4541,
 1.4546, 1.4550
 X 5 CrNi 18 10, X 2 CrNi 19 11, X 5 CrNi 18 9, G-X 6 CrNi 18 9, X 12 CrNi 18 9, G-X 8 CrNi 18 10, X 6
 CrNi 18 10, X 10 CrNiTi 18 10, X 5 CrNi 18 10
 AISI 304, 304H, 312, 321H, 347, 347H,
 UNS S30409, S32109, S34709, S30400, S32100, S34700

APPROVALS CE

WELDING POSITIONS



TYPICAL CHEMICAL ANALYSIS OF THE FILLER METAL (%)

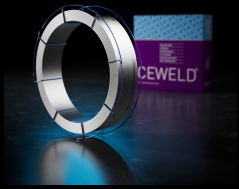
C	Si	Mn	P	S	Cr	Ni	Mo
0.02	0.5	2	0.2	0.2	21	10	0.3

ALL WELD MECHANICAL PROPERTIES

Heat Treatment	R _{P0,2} MPa	R _m MPa	A ₅ (%)	RT	Impact Energy (J) ISO-V -196°C
As Welded /	390	670	37	90	47

REDRYING TEMPERATURE Not required

GAS ACCORDING EN 14175



CEWELD SA 308L

SA 308L 2,4MM

Type	KG/unit	EANCode
K-415	25	8720663413703

SA 308L 3,2MM

Type	KG/unit	EANCode
K-415	25	8720663413710