

CEWELD SACW 410 NiMo

TYPE Tubular wire based on a 13% Chromium and 4% Nickel deposit for cladding components against corrosion, heat and wear resistance.

APPLICATIONS Rebuilding and cladding applications against thermal shock offering a fair corrosion resistance.

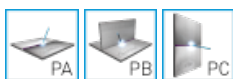
PROPERTIES High productivity, high deposition rates and improved wetting properties compared to solid wires with similar analysis. Attractive bead appearance without slag residues. Best to be used with welding flux FL 915

CLASSIFICATION AWS A 5.9: EC410NiMo
EN ISO 14700: T Fe7

SUITABLE FOR 1.4317, 1.4313, 1.4407, 1.4414,
GX4CrNi13-4, X3CrNiMo13-4, GX5CrNiMo13-4, GX4CrNiMo13-4
ACI Gr. CA 6 NM

APPROVALS No Approvals Found

WELDING POSITIONS



**TYPICAL CHEMICAL
ANALYSIS OF WELD METAL
(%)**

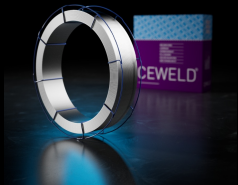
C	Si	Mn	Cr	Ni	Mo
0.06	0.2	0.4	12.5	4.5	0.7

**ALL WELD MECHANICAL
PROPERTIES**

Heat Treatment	R _{p0,2} MPa	R _m MPa	A ₅ (%)	Hardness Rockwell C
As Welded /				Avg. 45

REDRYING TEMPERATURE Not required

GAS ACCORDING EN 14175



CEWELD SACW 410 NiMo

SACW 410 NIMO 2,4MM

Type	KG/unit	EANCode
K-415	25	8720663411839