
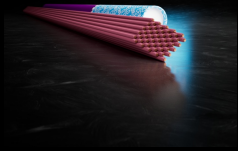


# CEWELD CuZn40G

TYPE	Universal fluxcored brass brazing alloy with good mechanical strength				
APPLICATIONS	Brazing: Steels, Copper, Cast iron, Copper alloys, Nickel and for welding Brass and Bronze. This alloy is mainly used in the furniture and the bicycle industry for joining steels, also this alloy can be used for rebuilding Brass- ship propellers by flame welding.				
PROPERTIES	Easy to use brass alloy for brazing without separate flux, (flux cored rod) good mechanical properties and high corrosion resistance. Flux/Paste: CEWELD Universal-Flux				
CLASSIFICATION	AWS	A 5.8: RBCuZn-A			
	EN ISO	17672: Cu 470			
	F-nr	106			
	W.Nr.	2.0533			
SUITABLE FOR	Brass, Copper, Steels, Manganese bronze, Nickel alloys, Cast iron etc..				
APPROVALS	No Approvals Found				
WELDING POSITIONS					
TYPICAL CHEMICAL ANALYSIS OF THE FILLER METAL (%)	Mn	Cu	Zn	Sn	Fe
	0.1	60	Rem.	0.35	0.25
ALL WELD MECHANICAL PROPERTIES	Heat Treatment	R <sub>p0,2</sub> MPa	R <sub>m</sub> MPa	A5 (%)	Hardness Brinell Hardness
	As Welded /		350		Avg. 88
REDRYING TEMPERATURE	Not required				
GAS ACCORDING EN 14175					



# CEWELD CuZn40G

CUZN40G 2,5 X 500MM

Type	KG/unit	EANCode
Tube	1	8720663421098