
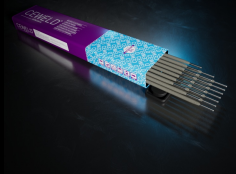




CEWELD 4830 Kb

TYPE	Basic electrode for heat resistant stainless steel SMAW welding.			
APPLICATIONS	Joining and cladding of fully austenitic heat resistant CrNi-steels of the same kind and similar Cast steels.			
PROPERTIES	High corrosion resistance and excellent weldability on both AC and DC+. The weld deposit is scale resistant up to 1000 °C			
CLASSIFICATION	EN ISO	3581-A: E Z 25 24 Nb B 32		
	FM	5		
	W.Nr.	1.4830		
SUITABLE FOR	W.Nr: 1.4855, 1.4845			
APPROVALS	No Approvals Found			
WELDING POSITIONS				
TYPICAL CHEMICAL ANALYSIS OF WELD METAL (%)	C	Cr	Ni	Nb
	0.24	24.4	24.2	1.15
ALL WELD MECHANICAL PROPERTIES	Heat Treatment	R _{p0,2} MPa	R _m MPa	A ₅ (%)
	As Welded /	400	600	10
REDRYING TEMPERATURE	300°C / 2 hr			
GAS ACCORDING EN 14175				



CEWELD 4830 Kb

4830 KB 3,2 X 350MM

Type	KG/unit	EANCode
Can	2,5	8720663415691