
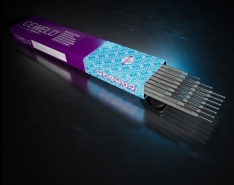




# CEWELD E DUR 600 Kb

TYPE	Basic coated electrode for the application of wear resistant coatings.				
APPLICATIONS	Hardfacing welding and/or rebuilding of machine parts, wheels, running surfaces, sliding surfaces, impact tools, chisels, shears, shredders, pumps, etc..				
PROPERTIES	CEWELD® E DUR 600 KB is a basic coated electrode with approx. 130% efficiency. The electrode is characterized by its tough hard and at the same time wear resistant deposition which offers high resistance to fatigue due to pressure and impact action in combination with abrasion. The martensitic structure gives this alloy good hot strength and oxidation resistance up to about 800 °C. Excellent rolling and sliding properties in metal-to-metal wear applications, among others.				
CLASSIFICATION	EN ISO	14700: E Fe8			
	DIN	8555: E 6-UM-60-GPZ			
SUITABLE FOR	Reassembly of worn machine parts, rock crushers, hammers, chisels, switch shafts, cam shafts and valve tappets, pump parts, dredge buckets, cutter pistons, shredder hammers, cutting tools, chain guides, running surfaces of heavily loaded PTO shafts, etc.				
APPROVALS	No Approvals Found				
WELDING POSITIONS					
TYPICAL CHEMICAL ANALYSIS OF WELD METAL (%)	C	Mn	Cr	Mo	Nb
	0.5	2.5	9	4	8.5
ALL WELD MECHANICAL PROPERTIES	Heat Treatment	R <sub>P0,2</sub> MPa	R <sub>m</sub> MPa	A5 (%)	Hardness Rockwell C
	As Welded /				Avg. 56
REDRYING TEMPERATURE	300°C / 2 hr				
GAS ACCORDING EN 14175					



# CEWELD E DUR 600 Kb

E DUR 600 KB 2,5 X 300MM

Type	KG/unit	EANCode
Can	2,4	8720663401687

E DUR 600 KB 3,2 X 350MM

Type	KG/unit	EANCode
Can	2,4	8720663401694

E DUR 600 KB 4,0 X 450MM

Type	KG/unit	EANCode
Can	3,0	8720663401700